

Corporate Presentation

June 2017



Forward-looking Statements and Resources

Summary of information: This presentation contains general and background information about Melbana Energy's activities current as at the date of the presentation and should not be considered to be comprehensive or to comprise all the information that an investor should consider when making an investment decision. The information is provided in summary form, and should not be considered to be comprehensive or complete.

Not financial product advice: This presentation is not financial product, investment advice or a recommendation to acquire securities and has been prepared without taking into account the objectives, financial situation or needs of individuals. Before making an investment decision investors should consider the appropriateness of the information having regard to their own objectives, financial situation and needs, and seek legal, taxation and financial advice appropriate to their jurisdiction and circumstances.

Disclaimer: Melbana Energy and its related bodies corporate and each of their respective directors, agents, officers, employees and advisers expressly disclaim, to the maximum extent permitted by law, all liabilities (however caused, including negligence) in respect of, make no representations regarding, and take no responsibility for, any part of this presentation and make no representation or warranty as to the currency, accuracy, reliability or completeness of any information, statements, opinions, conclusions or representations contained in this presentation. In particular, this presentation does not constitute, and shall not be relied upon as, a promise, representation, warranty or guarantee as to the past, present or the future performance of Melbana Energy.

Future performance: This presentation contains certain forward-looking statements and opinion. The forward-looking statements, opinion and estimates provided in this presentation are based on assumptions and contingencies which are subject to change without notice, as are statements about market and industry trends, which are based on interpretations of current market conditions. Forward-looking statements, including projections, forecasts and estimates, are provided as a general guide only and should not be relied on as an indication or guarantee of future performance and involve known and unknown risks, uncertainties and other factors, many of which are outside the control of Melbana Energy. Past performance is not necessarily a guide to future performance and no representation or warranty is made as to the likelihood of achievement or reasonableness of any forward looking statements or other forecast.

Risks: An investment in Melbana Energy is subject to investment and other known and unknown risks, some of which are beyond the control of Melbana Energy.

Not an offer: This presentation is not, and should not be considered as, an offer or an invitation to acquire securities in Melbana Energy or any other financial products and neither this document nor any of its contents will form the basis of any contract or commitment. This presentation is not a prospectus. Offers of securities in Melbana Energy will only be made in places in which, or to persons to whom it would be lawful to make such offers. This presentation must not be disclosed to any other party and does not carry any right of publication. Neither this presentation nor any of its contents may be reproduced or used for any other purpose without the prior written consent of Melbana Energy.

No Distribution in the US: This presentation is not an offer of securities for sale in the United States. Any securities to be issued by Melbana Energy have not been and will not be registered under the US Securities Act of 1933, as amended (the "US Securities Act") and may not be offered or sold in the United States absent registration or an exemption from registration under the US Securities Act. No public offer of the securities is being made in the United States and the information contained herein does not constitute an offer of securities for sale in the United States. This presentation is not for distribution directly or indirectly in or into the United States or to US persons.

Monetary values: Unless otherwise stated, all dollar values are in Australian dollars (A\$). The information in this presentation remains subject to change without notice.

No distribution: Distribution of this presentation may be restricted by law. Persons who come into possession of this presentation should seek advice on and observe any such restrictions. Any failure to comply with such restrictions may constitute a violation of applicable securities laws.

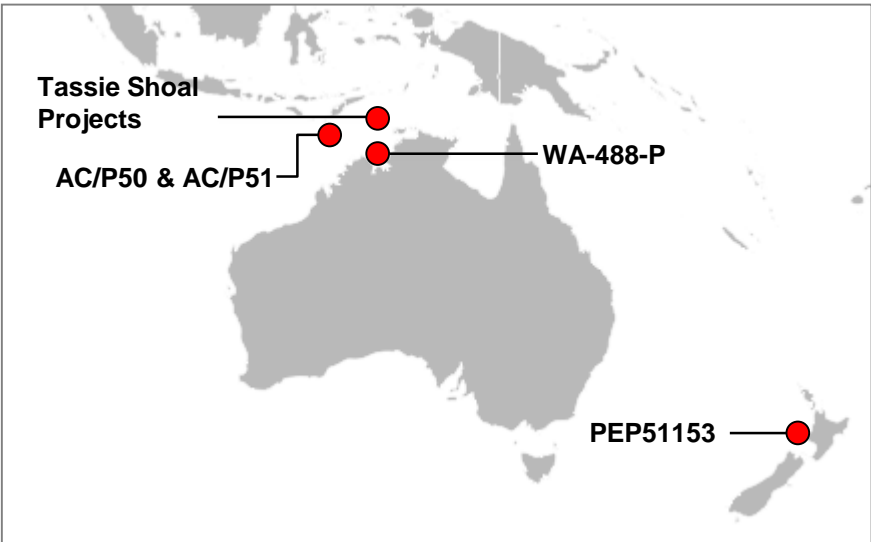
Contingent and Prospective Resources: The information in this presentation that relates to Contingent Resources and Prospective Resources for Melbana Energy is based on, and fairly represents, information and supporting documentation compiled by Peter Stickland, the Managing Director and Chief Executive Officer of Melbana Energy. Mr Stickland B.Sc (Hons) has over 25 years of relevant experience, is a member of the European Association of Geoscientists & Engineers and the Petroleum and Exploration Society of Australia, and consents to the publication of the resource assessments contained herein. The Contingent Resource and Prospective Resource estimates are consistent with the definitions of hydrocarbon resources that appear in the Listing Rules. Conversion factors: 6 Bscf gas equals 1 MMboe; 1 bbl condensate equals 1 boe.

Summary



Cuba

- Block 9 exploration potential increased 50% to ~12.5 billion barrels of oil-in-place with recoverable Prospective Resources of 637 million barrels (100% share, unrisks Best Estimate)*
- High graded Alameda-1 prospect presents an opportunity to drill three objectives with combined exploration potential of over 2.5 billion barrels Oil-in-Place and 130 million barrels of recoverable oil on a 100% unrisks, best estimate basis*
- Targeting drilling 1-2 wells commencing in first half 2018
- Only ASX listed company with Cuban energy exposure



NZ

- High impact Pukatea-1 drilling to commence Oct-Nov 2017 on PEP51153 (Melbana 30%)
- Prospective Resource of 12.4 million boe (unrisks Best Estimate, 100% share)*, reservoir capable of rates up to 5,000 barrels per day

Australia

- Beehive prospect located in WA-488-P is potentially the largest undrilled conventional target in Australia

Corporate

- Strong balance sheet ~ \$3.6m cash, no debt

Corporate Snapshot

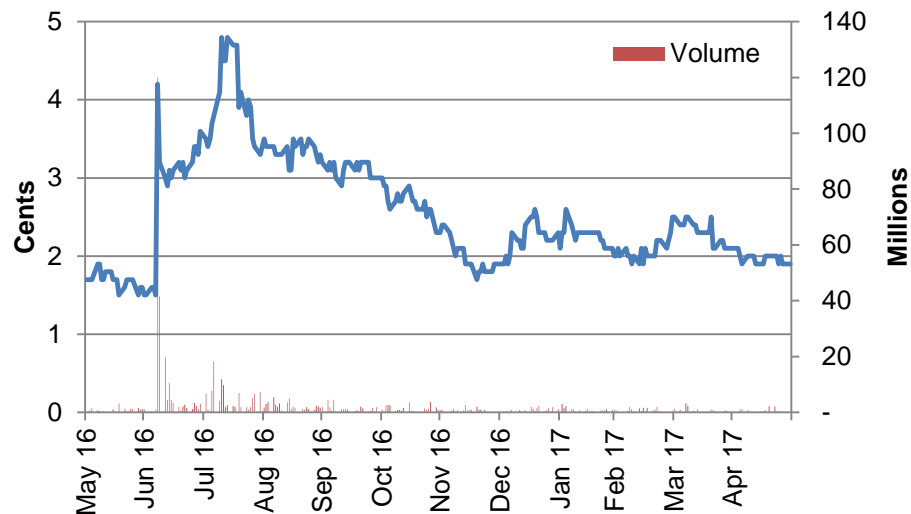
Capital Structure

Share price (as at 31/5/17)	A\$0.019
Shares on issue	953.2m
Options	13.25m
Share Performance Rights	26.3m
Market Capitalisation	~A\$19m
Cash (31 March 2017)	~A\$3.6m

Major Shareholders

Leni Gas Cuba Limited	12.95%*
-----------------------	---------

Share Price



* As of 27 February 2017 per parent company, LGC Capital, quarterly report

Experienced Leadership

Board & Management Team

Board of Directors	Managing Director & CEO (appointed Dec 2014)	Peter Stickland	Geoscientist, 27 years international experience. Formerly BHP Billiton, then CEO of Tap Oil (2008-10)
	Non-Executive Chairman (joined board July 2015, appointed Chairman Nov 2015)	Andrew Purcell	12 year investment banking with Macquarie Bank then Credit Suisse. 10 years specialising in development of projects in emerging markets
	Non-Executive Director (joined board July 2015)	Michael Sandy	Geologist, 40 years international experience. Formerly Oil Search and Novus
Senior Team	CFO & Company Secretary	Colin Naylor	Over 30 years financial experience in the resource sector
	Exec. Manager – Commercial & BD	Robert Zammit	Over 25 years international oil and gas experience. Formerly ExxonMobil
	Chief Geoscientist	Errol Johnstone	Over 29 years with ExxonMobil. Expert in structural geology and regional synthesis
	Cuba Representative	Rafael Tenreyro	Over 40 years experience. Formerly Exploration Director for Cuban National Oil Company
	Senior Geoscientist	Dean Johnstone	Over 30 years experience, predominantly with ExxonMobil, where he was Structural Geology Advisor for Canada



Cuba

Cuba Block 9 – An Overview

Block 9 PSC

- 100%* interest in Block 9 PSC (2,380km² or 588,000 acres) located onshore in Cuba
- 25 year term (awarded in 2015)
- Exploration sub periods:
 - 1 (Sept 2015 to Nov 2017) – studies and seismic reprocessing – largely completed
 - 2 (Nov 2017 to Nov 2019) – 200km 2D seismic acquisition (under review)

Excellent Operating Environment

- Block 9 consists largely of low-lying farm land
- Sealed roads connect Block 9 to Havana (~160km), a deep water port with oil terminal (~75km) and international airport (~40km)
- Multiple modern land drilling rigs currently operating in Cuba



* Subject to Petro Australis conditional option to back in for 40%, no later than Sept 2017. See announcement dated 3 Sept 2015

Cuba Block 9 – An Oil Rich Region

Cuba Prospectivity and Market

- Represents under-explored south-eastern margin of the Gulf of Mexico - one of the world's great petroleum mega provinces
- Limited application of modern exploration techniques due to 50+ year US embargo
- Cuba currently producing ~45,000 barrels of oil and 3 million cubic metres of gas per day
- Strong focus on growing production
- ~50% of oil imported (mostly from Venezuela)

Block 9 Prospectivity

- Lightly explored but contains natural oil seeps and has several small discoveries
- Along trend from Varadero oil field (>11 billion barrels)
- Potential for Varadero type structures in Block 9
- Adjacent to TSX-listed Sherritt International's producing area (~14,400 barrels per day at operating cost of ~US\$7/bbl in Q4 2016)**



**Sherritt International Corporation Fourth Quarter 2016 Report

Cuba Block 9 – Resource Assessment

Exploration potential for over 12 billion barrels of oil-in-place

- Exploration potential increased 50% to over 12.5 billion barrels of oil-in-place and Prospective Resources of 637 million barrels (unrisked Best Estimate, 100% basis)
- 19 individual leads identified in conventional plays
- Depths between 2,000 and 4,000 metres
- High potential multi-target Alameda prospect identified close to historical oil recoveries
- Recoverable volumes conservatively estimated using the historical 5% recovery factor for nearby Cuban fields
- Higher quality light crude oil potential in Block 9 demonstrated by historical oil recoveries
- Ongoing assessment may add further potential
- Additional secondary objectives in Upper Sheet and Shallow Tertiary plays
- Targeting drilling two wells in first half 2018 at combined cost ~US\$20-30 million

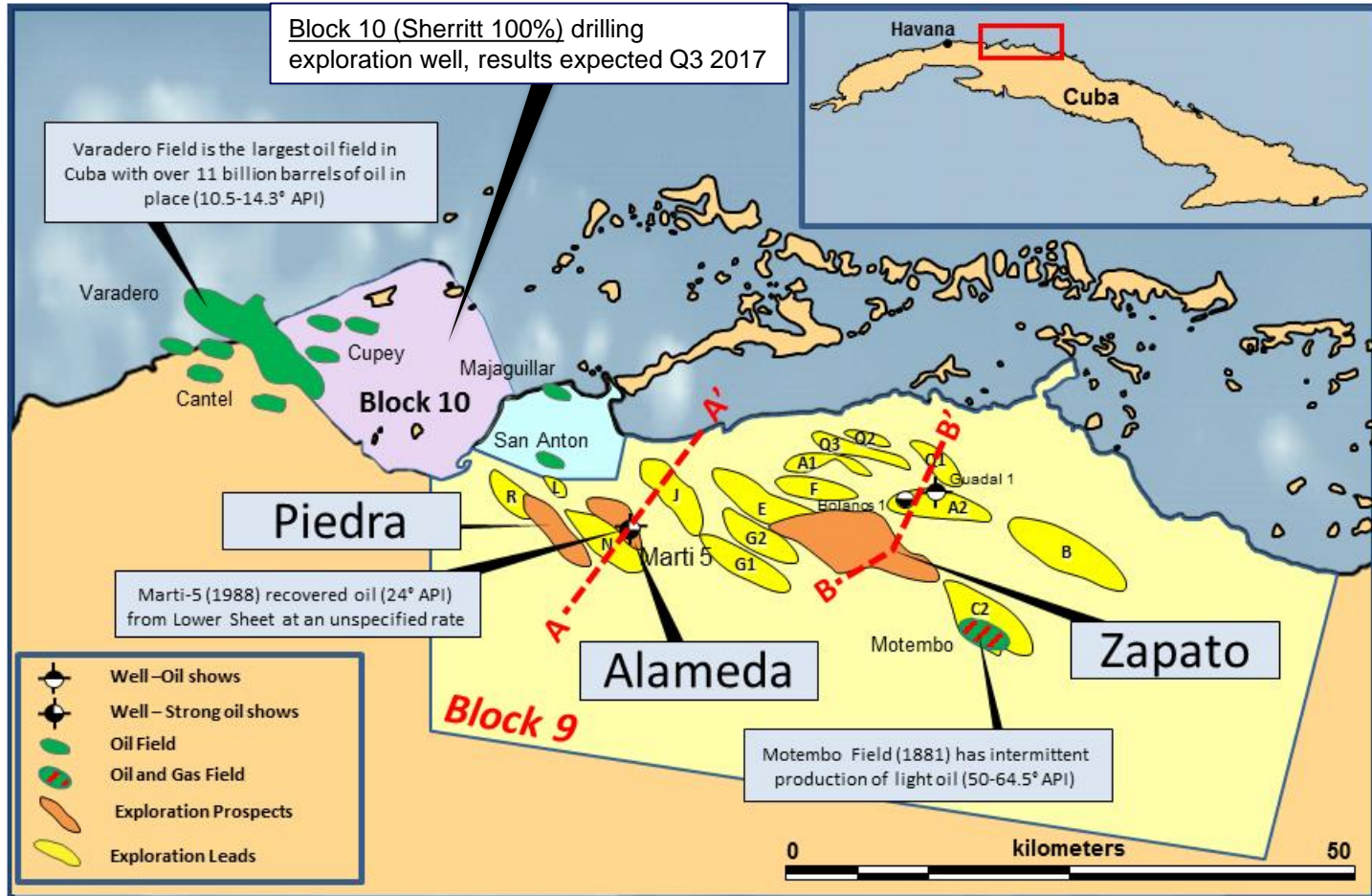


Block 9 Exploration Potential	Low	Best	High	Mean
	MMstb	MMstb	MMstb	MMstb
Oil-in-Place (unrisked, 100%)	1,181	12,746	44,151	18,518
Prospective Resources (recoverable, unrisked, 100%)	59	637	2,208	926

Prospective Resources Cautionary Statement - The estimated quantities of petroleum that may potentially be recovered by the application of a future development project(s) relate to undiscovered accumulations. These estimates have both an associated risk of discovery and a risk of development. Future exploration appraisal and evaluation is required to determine the existence of a significant quantity of potentially moveable hydrocarbons.

Cuba Block 9 – 19 Leads in Conventional Play

Priority drill targets identified – Alameda, Zapato & Piedra

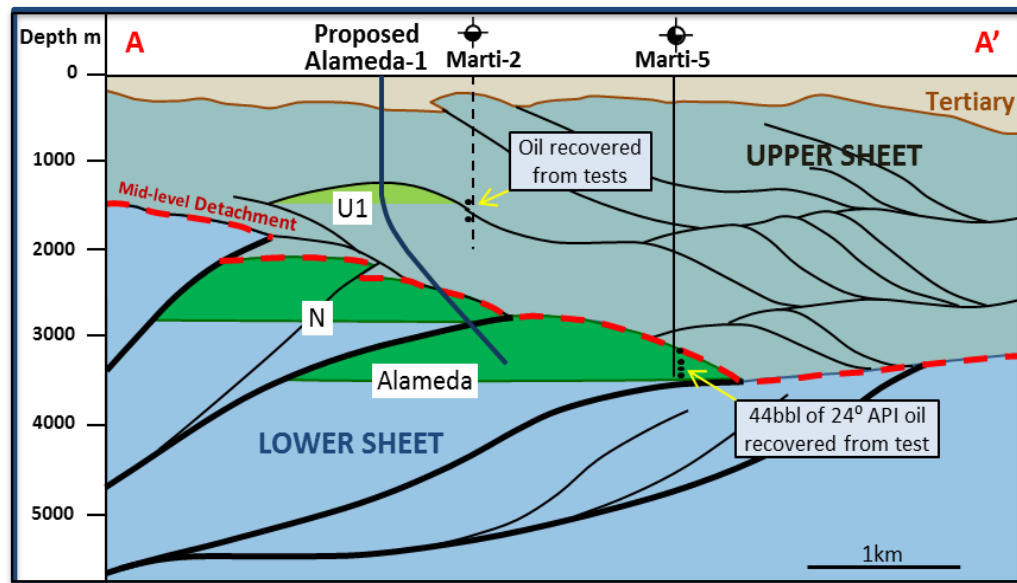


Cuba Block 9 – Alameda Prospect

Multi-target exploration drilling opportunity close to historic oil recoveries

- Primary objective in depth range from 3,000 to 3,700 metres
- Marti-5 (drilled 1988) recovered lighter oil (24°API) and had oil shows over a 850 metre gross interval from the Alameda objective
- 32% chance of success at primary objective
- Two shallower secondary objectives
- Combined exploration potential of over 2.5 billion barrels Oil-in-Place and 130 million barrels of recoverable oil on a 100% unrisked, best estimate basis
- Alameda-1 targeting up dip of known oil at two levels
- Currently designing well to test Alameda with potential for drilling in first half 2018
- Estimated 80 days to drill

* Chance of Success



Alameda Recoverable Prospective Resources (MMstb)

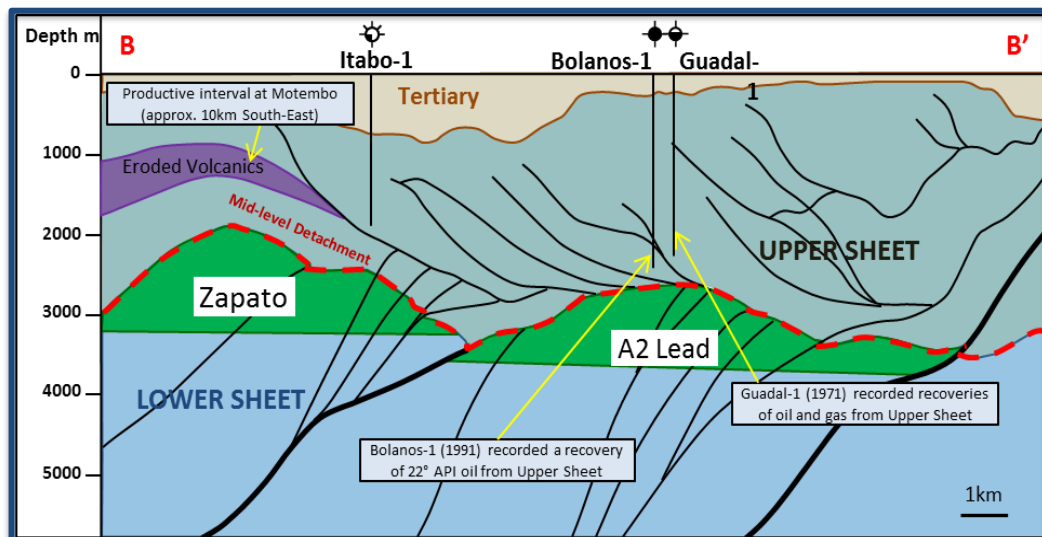
Objective	CoS*	Low	Best	High	Mean
U1	17%	2	25	93	38
N	22%	4	41	129	56
Alameda	32%	3	65	214	91

Prospective Resources Cautionary Statement - The estimated quantities of petroleum that may potentially be recovered by the application of a future development project(s) relate to undiscovered accumulations. These estimates have both an associated risk of discovery and a risk of development. Future exploration appraisal and evaluation is required to determine the existence of a significant quantity of potentially moveable hydrocarbons.

Cuba Block 9 – High Potential Zapato Prospect

Multiple structures with hundred million barrel exploration potential

- Zapato Prospect is a large structure targeting fractured carbonate objective
- Close to the shallower Motembo oil field which historically produced high quality light crude, demonstrating working oil system
- Crest of structure at approximately 2,000 metres with nearly 1,000 metres vertical relief
- Independent of Alameda-1 results
- Preliminary drilling design undertaken for potential early drilling in first half 2018
- A2 Lead is a large structure supported by two nearby shallow wells that recovered oil from the upper sheet above the deeper A2 lower sheet target



Zapato Prospective Resource (100%, MMstb)

	CoS*	Low	Best	High	Mean
Zapato	25%	5	71	297	118
A2 Lead	21%	9	69	213	93

Prospective Resources Cautionary Statement - The estimated quantities of petroleum that may potentially be recovered by the application of a future development project(s) relate to undiscovered accumulations. These estimates have both an associated risk of discovery and a risk of development. Future exploration appraisal and evaluation is required to determine the existence of a significant quantity of potentially moveable hydrocarbons.

* Chance of Success

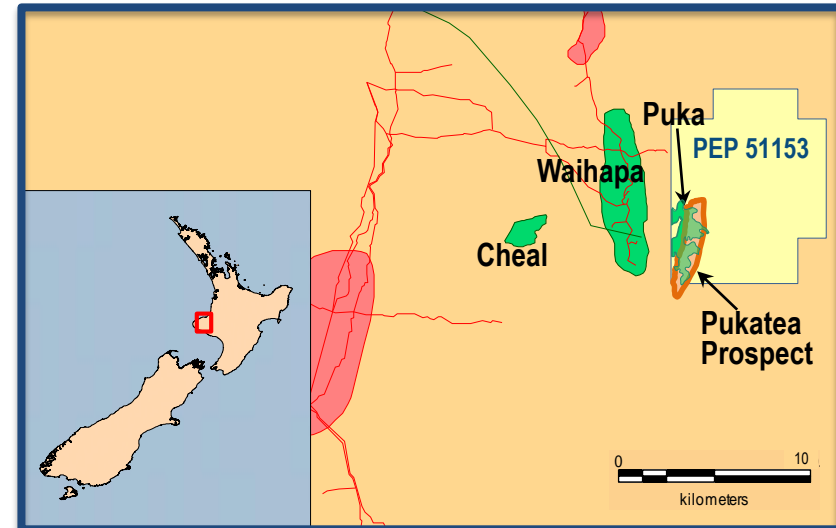


Australia and New Zealand



Onshore New Zealand – PEP51153 Overview

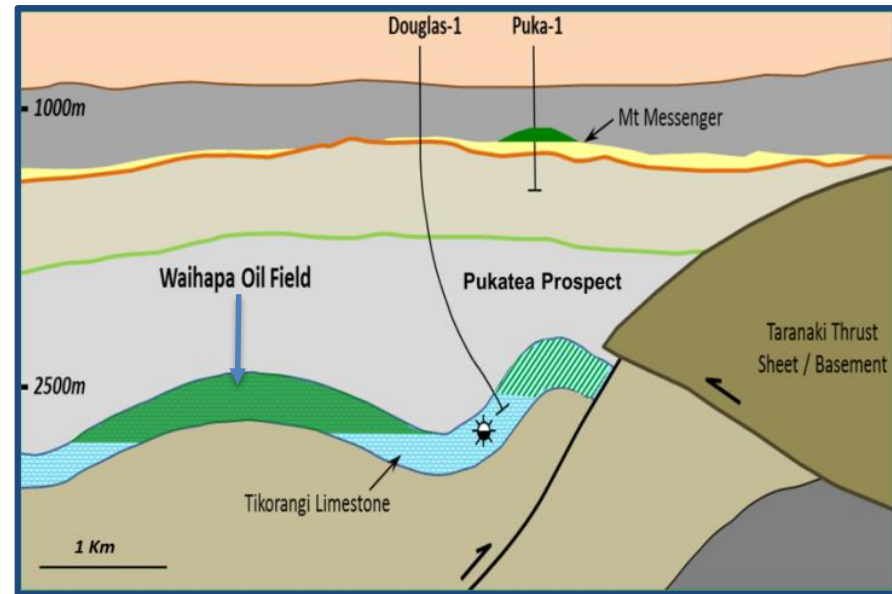
- Melbana has 30% interest in PEP51153 (85km² or 21,000 acres), operated by TAG Oil Ltd (70%)
- Located onshore in New Zealand <10km east of TAG Oil Ltd's producing Cheal field, where there has been recent drilling success
- PEP51153 contains the high impact Pukatea prospect, drilling commencing Oct/Nov 2017
- PEP51153 also contains the shallow Puka oil accumulation discovered in 2013, with two oil production wells currently suspended
- Close to existing infrastructure with multiple low cost alternative development paths for any discoveries
- NZ fiscal terms are some of the best in the world
- Robust natural gas market in the North Island of NZ



Onshore New Zealand – Pukatea-1

High impact Pukatea prospect to commence drilling in ~4 months

- High impact exploration opportunity, targeting a highly productive conventional reservoir in the Tikorangi Limestone directly below the Puka oil pool
- Prospective resources estimated to range from 1.3 to 40 million barrels (Low-High estimates, 100% share)
- Production capability from the Tikorangi Limestone has been well proven at the adjacent Waihapa oil field, which has produced in excess of 23 MMstb of oil to date, with individual initial rates up to 5,000 barrels/day
- Good reservoir and oil shows demonstrated by 2012 Douglas-1 well drilled down-dip at the edge of the Pukatea prospect, with more than 350m of up-dip potential
- Melbana's share of the dry hole cost of the well estimated at ~A\$2.8 million (including potential testing)
- Drilling commencing Oct/Nov 2017
- Anticipate ~30 days to reach objective



Prospective Resources (MMboe, 100%)

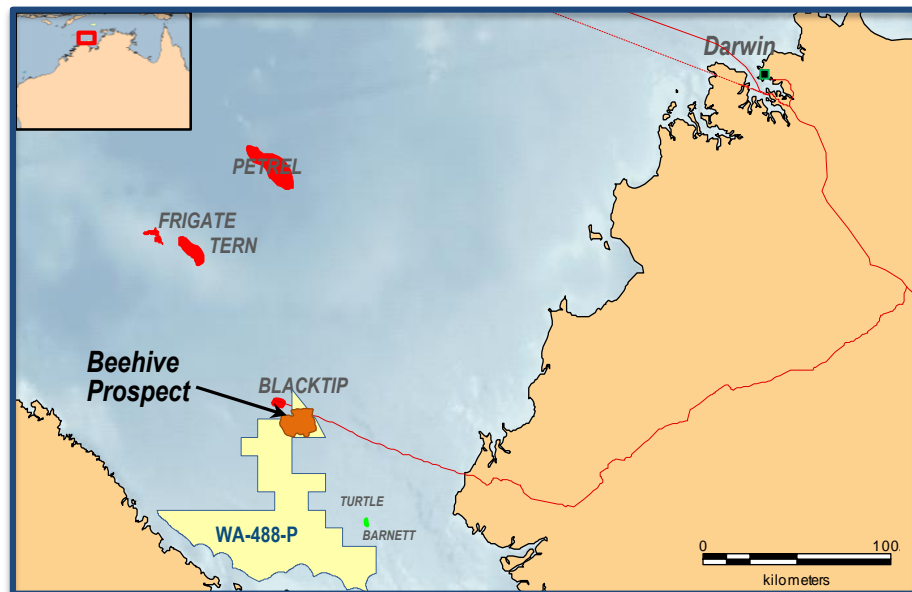
	CoS	Low	Best	Mean	High
Pukatea	19%	1.3	12.4	17.1	40

Prospective Resources Cautionary Statement - The estimated quantities of petroleum that may potentially be recovered by the application of a future development project(s) relate to undiscovered accumulations. These estimates have both an associated risk of discovery and a risk of development. Future exploration appraisal and evaluation is required to determine the existence of a significant quantity of potentially moveable hydrocarbons.

Australia – WA-488-P & the Beehive Prospect

Beehive - One of the largest undrilled hydrocarbon structures in Australia

- Beehive is a significant, multi billion barrel oil prospect located on WA-488-P
- Beehive Prospective Resources estimated to range from 97 to 2,033 million barrels (Low-High estimates)
- Potentially the largest undrilled oil prospect offshore Australia
- Shallow water, suitable for lower cost jack-up drilling rig
- Developable by FPSO or pipeline
- Recent 2D seismic broadband reprocessing and seismic inversion substantially enhanced characterisation of Beehive Prospect
- Now expanding 2D seismic reprocessing across rest of Beehive Prospect
- Current active farm down process underway to secure partner to fund potential drilling in 2018



Prospective Resources (Mmboe, 100%)*

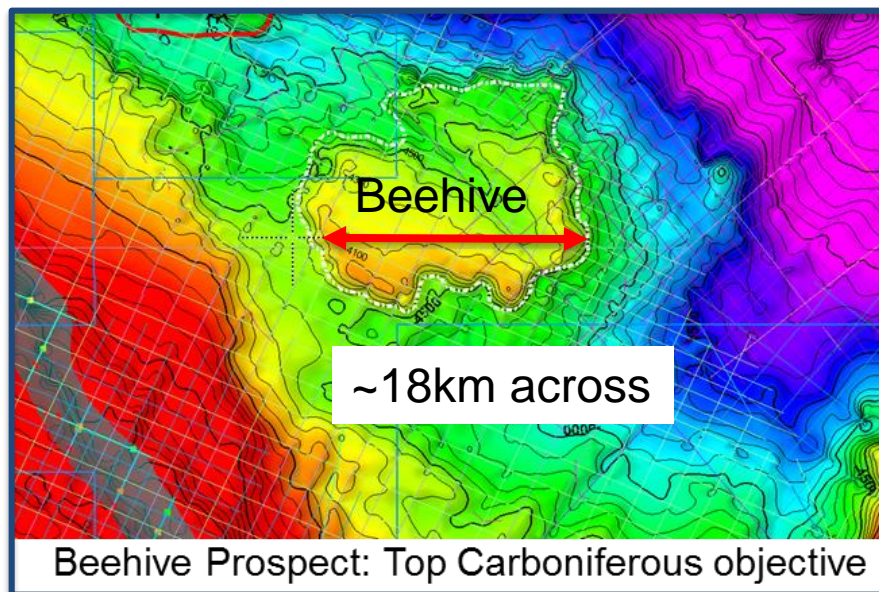
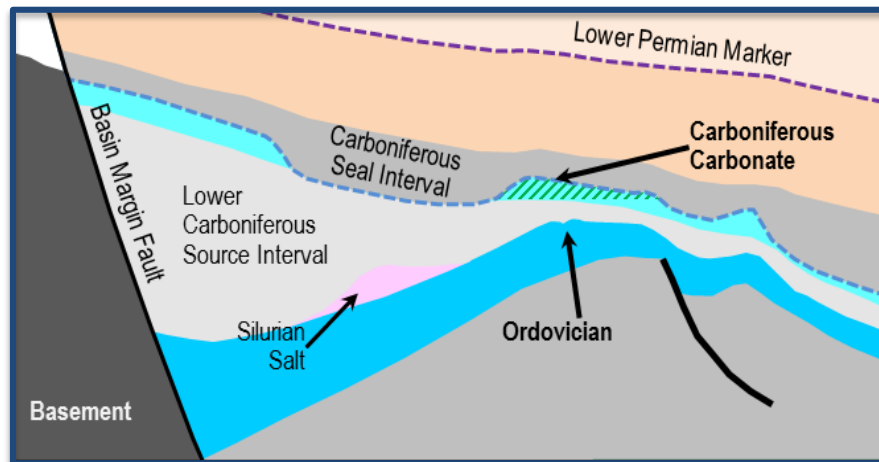
Beehive	CoS	Low	Best	Mean	High
Carboniferous objective	16%	97	558	940	2033

Prospective Resources Cautionary Statement - The estimated quantities of petroleum that may potentially be recovered by the application of a future development project(s) relate to undiscovered accumulations. These estimates have both an associated risk of discovery and a risk of development. Future exploration appraisal and evaluation is required to determine the existence of a significant quantity of potentially moveable hydrocarbons.

Australia – Beehive Prospect

Beehive – a feature of enormous scale

- Located in ~40 metres water depth
- Target depth 4,000 – 4,500m
- Prospect reservoir is an isolated carbonate platform of Carboniferous age.
- Enormous feature:
 - Carbonate platform is 18km across (approx. same as Melbourne CBD to Airport)
 - Mapped closure ~140km²
 - Vertical relief ~400 metres





Corporate & Activity Pipeline

Investment Highlights

Cuba

- ✓ Only ASX listed company with Cuban energy exposure
- ✓ Block 9 exploration potential increased 50% to >12 billion barrels of oil-in-place & Prospective Resources of >600 million barrels (unrisked Best Estimate, 100% share)*
- ✓ Priority drill targets identified:
 - Alameda Prospect
 - Zapato and Piedra Prospects
- ✓ Targeting drilling 2 wells starting in first half 2018

NZ

- ✓ High impact Pukatea-1 starts drilling in ~ 4 months on PEP51153
- ✓ Pukatea has a best estimate prospective resource of 12.4 million boe* (unrisked , 100% share)

Australia

- ✓ Beehive prospect located in WA-488-P is potentially the largest undrilled target in Australia
- ✓ Farmout process ongoing

Corporate

- ✓ Strong balance sheet - \$3.6m cash, no debt
- ✓ Experienced leadership team

* See Prospective Resources Cautionary Statement on page 9

Multiple catalysts to support a significant re-rating

NEW ZEALAND PEP51153

- Pukatea-1 drilling commencing Oct/Nov 2017
- Long lead equipment ordered
- Result anticipated before end 2017

CUBA BLOCK 9 PSC

- Multiple high impact exploration drill targets identified
- Up to two wells to be drilled commencing first half 2018
- Drill program planning underway

AUSTRALIA WA-488-P

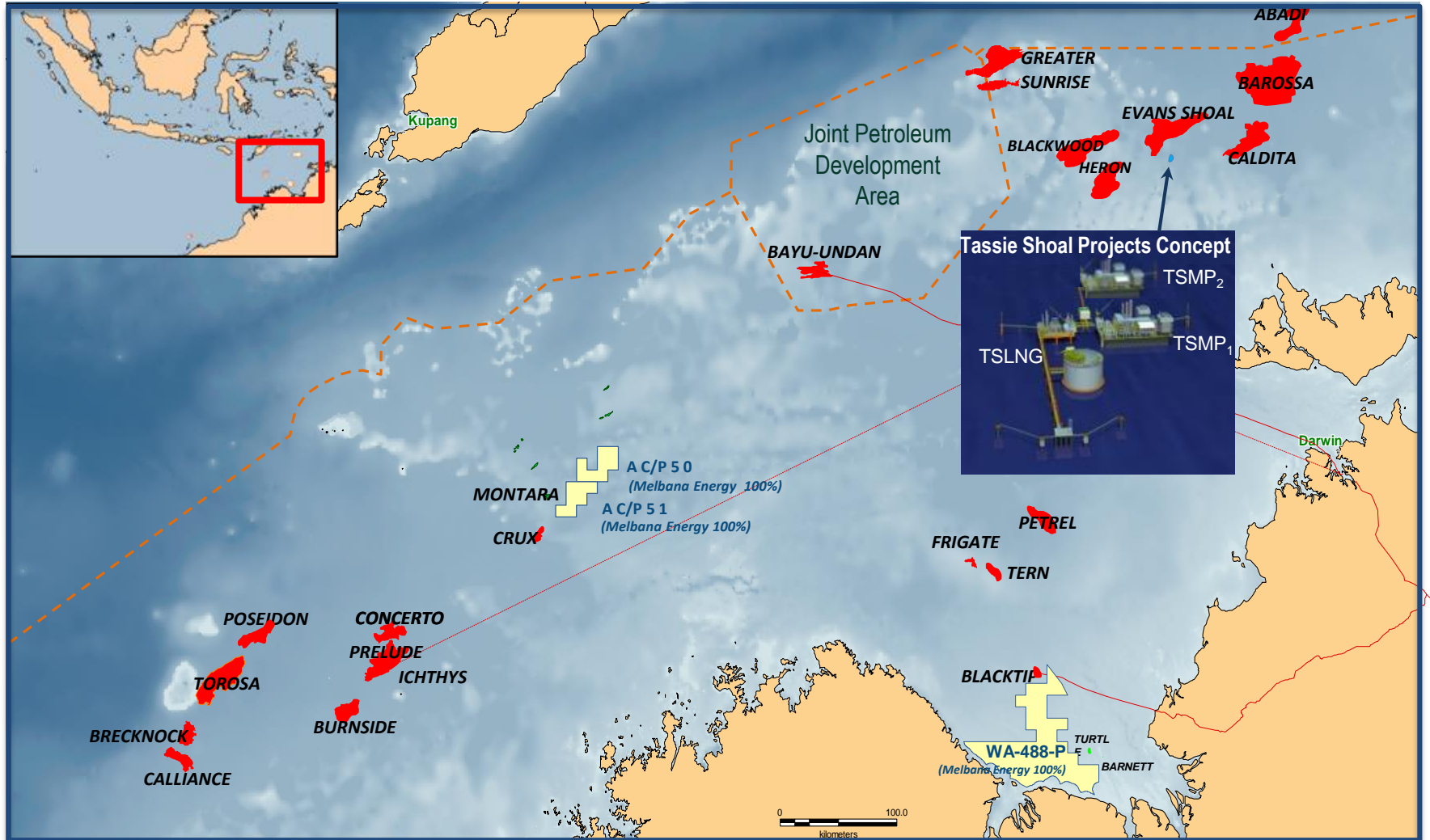
- Farmout process ongoing
- If farmout successful, potential drilling of Beehive in late 2018

Peter Stickland
Managing Director & CEO
Melbana Energy Limited
L15, 500 Collins Street
Melbourne VIC 3000 Australia
Ph: +61 3 8625 6000
Email: admin@melbana.com
www.melbana.com



Northern Australia Acreage and Projects

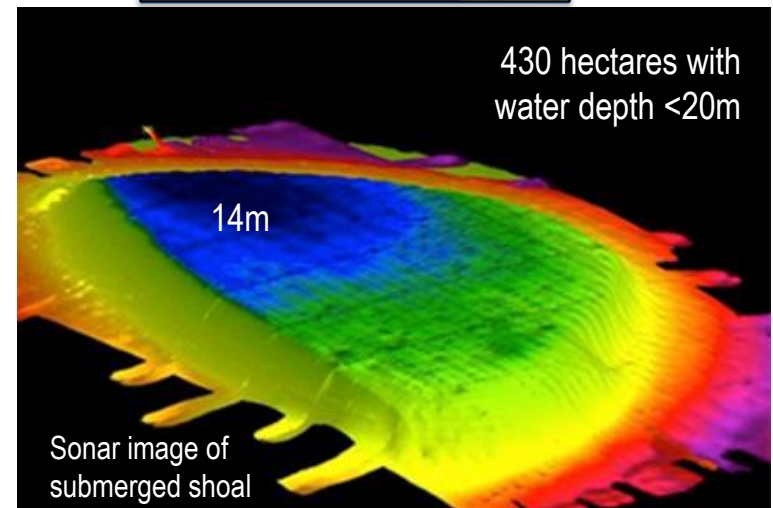
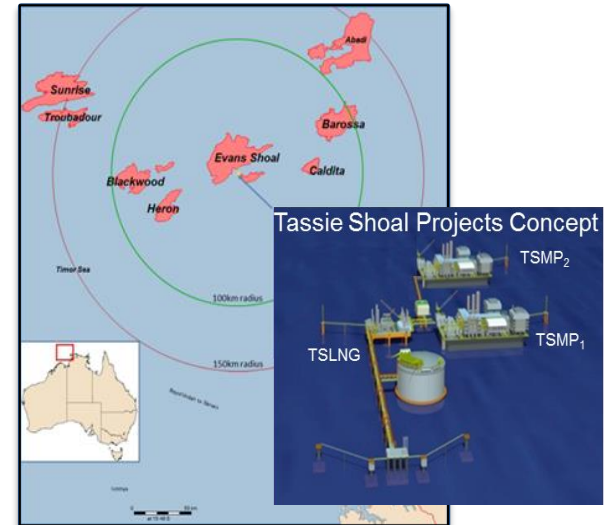
Discrete upstream projects adjacent to proven hydrocarbons



Tassie Shoal Projects (Melbana 100%)

Shallow water, innovative low cost development paths for regional stranded gas

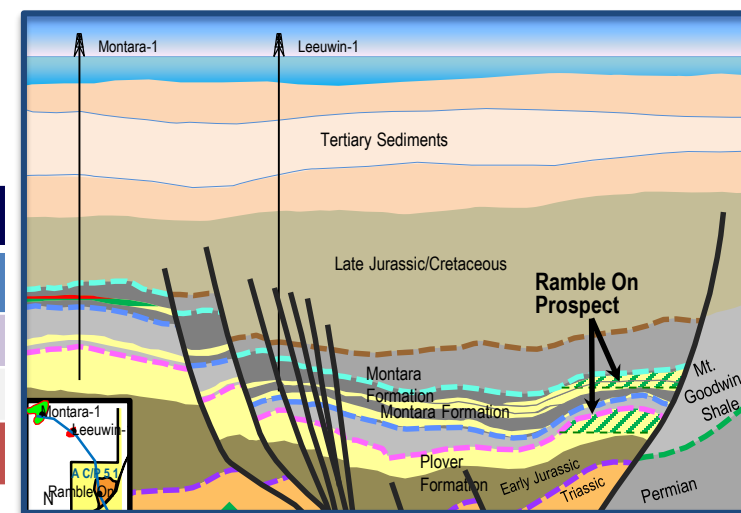
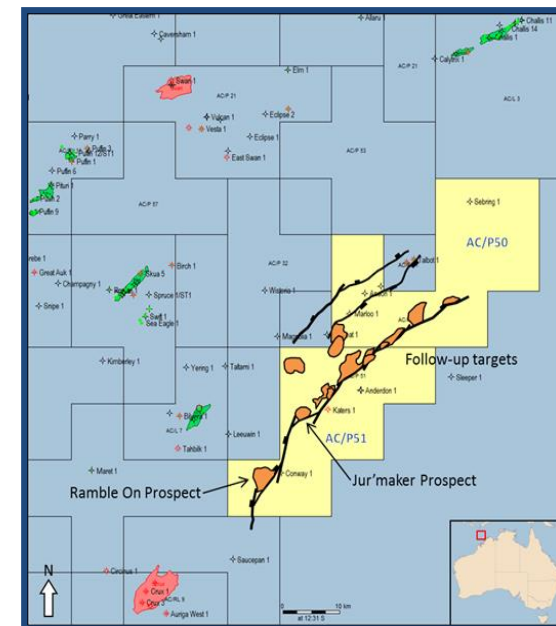
- Region has substantial undeveloped high CO₂ gas that needs a low cost development solution
- Methanol manufacturing uses gas with high CO₂ (up to 30%) as feedstock for value added product
- Offshore construction and installation of Tassie Shoal Methanol Plants (TSMP) and Tassie Shoal LNG (TSLNG) dramatically reduces capital costs compared to alternatives
- Melbana Energy has developed the concepts for constructing Methanol and LNG plants at Tassie Shoal
 - Long-dated Federal & State Government Environmental approvals (valid to 2052)
 - Undertaken pre-FEED engineering studies
 - Established relationships with key technology providers
- Low holding cost with significant potential value



AC/P50 & AC/P51 (Melbana100%*): Multiple oil targets

Melbana fully carried through 3D seismic reprocessing

- Identified material Ramble On and Jur'maker oil prospects in proven petroleum system defined on modern 3D seismic data
- Suitable for lower cost jack-up drilling rig
- Potential highlighted by Auriga West-1 well reported to find hydrocarbons in 2015 in similar play type
- Recently farmed out 45%
- 3D seismic reprocessing completed (Melbana free carried)
- Near term activities:
 - Update prospectivity on reprocessed seismic data
 - Seek to farm out in 2017
 - Future drilling potential if farmout successful



Prospective Resources (100%)**

Ramble On	CoS	Low	Best	Mean	High
Oil Scenario (MMstb)	9%	8	39	56	130
Gas Scenario (Bscf)	2%	29	162	461	1,136
Total (MMboe)	11%	8	38	63	150

* Subject to options by Rouge Rock Pty Ltd for a 45% and Far Cape Pte Ltd for a 5% participating interest

**See Prospective Resources Cautionary Statement on page 9